

Quarterly Travel & Visitor Accommodation Bulletin

At A Glance

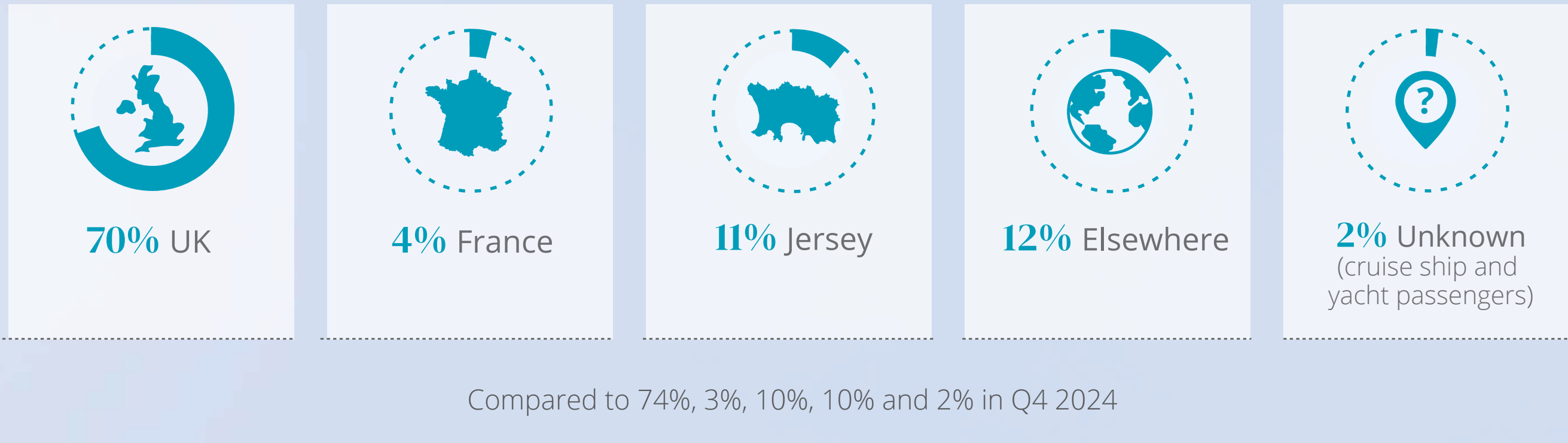
QUARTER 4 2025

Number of visitors



*These spend figures are based on the last Guernsey Visitor Spend Survey (£582 average spend per staying visitor by aeroplane and ferry and £112 average spend per day trip visitor by aeroplane and ferry) and Guernsey Cruise Visitor Exit Survey (£34 average spend in Guernsey per cruise visitor), which took place during 2019/20. These values have been updated using the Guernsey RPI and multiplied by the actual number of visitors to give an estimate of the total spend. The average spend of people visiting on yachts is unknown, so is not included in the total. Figures may not sum exactly to totals due to rounding

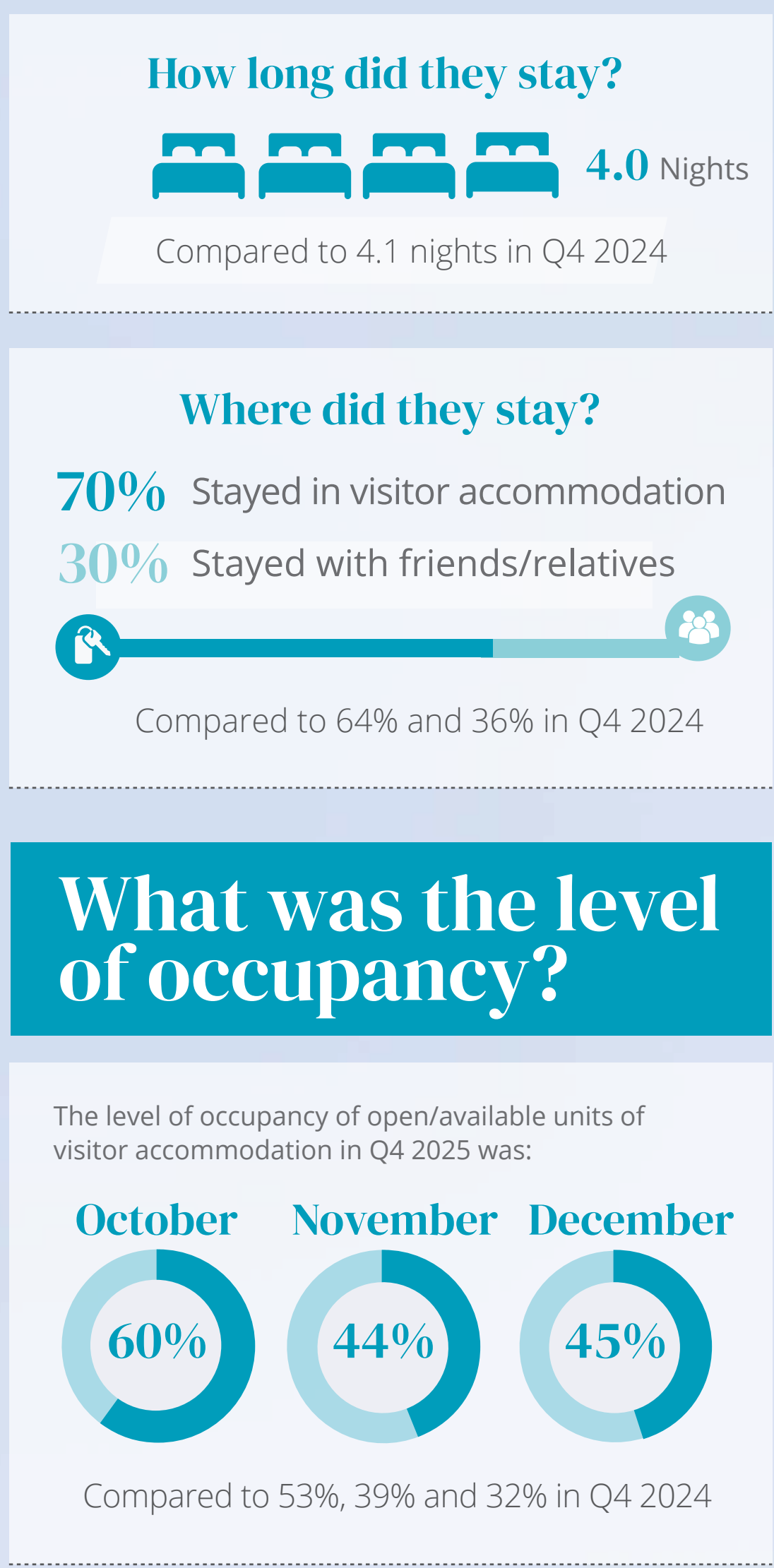
Where are they from?



Reason for Visit



Staying Visitors



What is our capacity?



Net Promoter Score



More detail behind the statistics presented here can be found in the Guernsey Quarterly Travel and Visitor Accommodation Bulletin Quarter 4 2025 available at www.gov.gg/travel_and_visitor